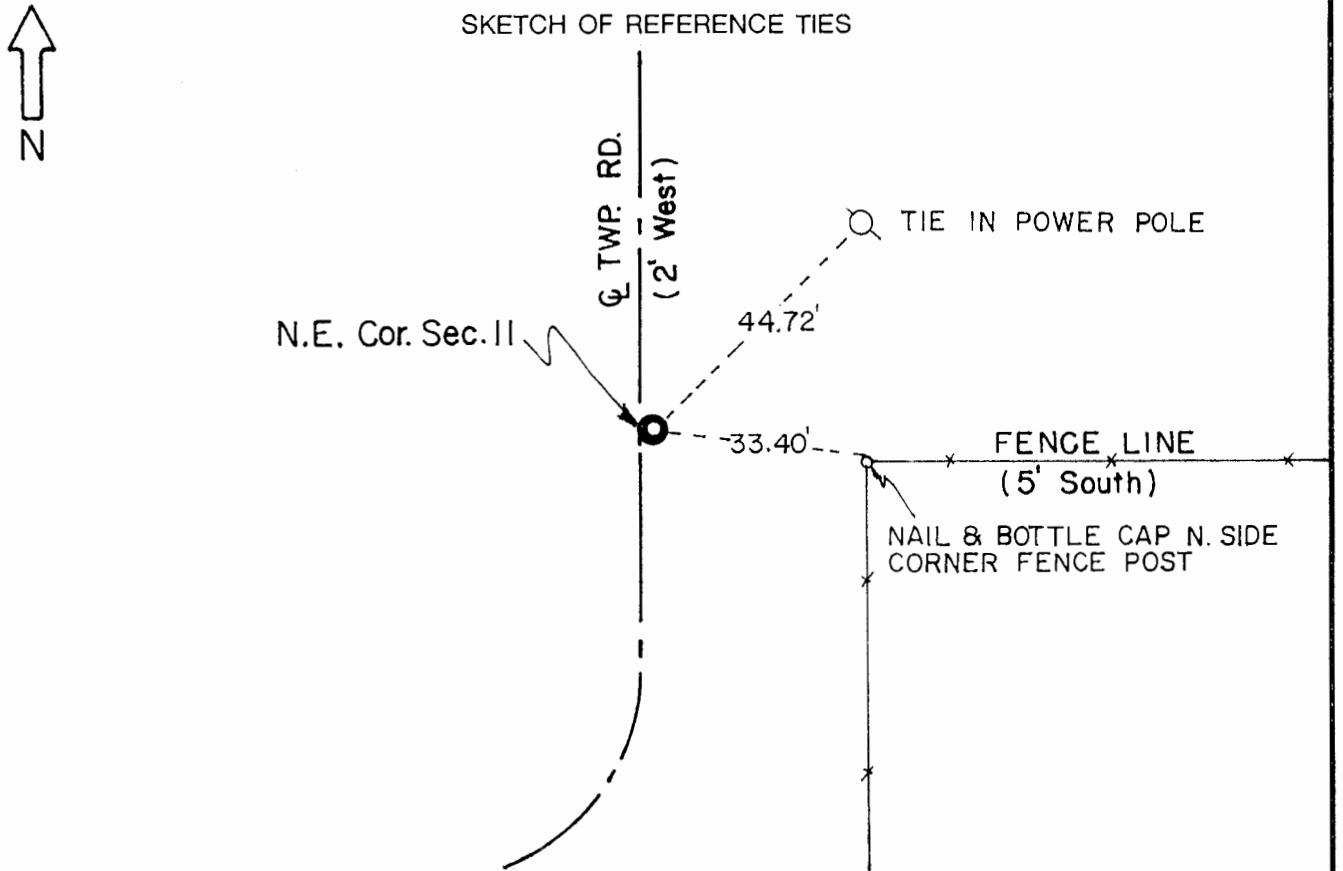


# CERTIFICATE OF LOCATION OF GOVERNMENT CORNER

**Northeast** Corner of Section **11** , Township **108** , Range **41** 5th P.M.  
STATE OF MINNESOTA, County of Murray.

**Statement:** April 25, 1989 - Found a large field stone verified by former County witness ties. Placed a Mn/DOT Cast Iron Monument at the pavement surface.



Statement of evidence relative to this corner location is on the back of page.

I hereby certify that this document and the data contained herein was prepared by me or under my direct supervision and that I am a duly Registered Land Surveyor under the laws of the State of Minnesota.

*[Signature]* 2-23-91  
Duane A. Bonnema Date

Minnesota Registration No. 14895

OFFICE OF THE COUNTY RECORDER  
COUNTY OF MURRAY **MAR 1 1 1991**

I hereby certify that this document was filed in the County Recorder's office at \_\_\_M. on the \_\_\_ day of \_\_\_\_\_ A.D., 19\_\_

County Recorder *[Signature]*

By \_\_\_\_\_, Deputy  
DOCUMENT NO. \_\_\_\_\_

Northeast Cor. Sec. 11 T108N-R41W

Statement:

- September 1861*      *Original Government Land Office Surveyor L. G. M. Fletcher records in his field notes, "built mound with trench pits, charred stake, per instructions."*
- Date Unknown*      *The Murray County Highway Engineer's Office records in the County Surveyor's Record Book "Stone 6 feet North of fence line running East" and establishes witness ties to the Corner.*
- April 17, 1979*      *The Murray County Highway Engineer's Office records that they found a field stone 18" below grade and they placed a steel pin above stone. They also give witness ties to the Corner.*
- April 25, 1989*      *Duane A. Bonnema, LS Reg. No. 14895, found a large field stone which was verified by two witness ties recorded in 1979 and one witness tie recorded by the County at an unknown date (possibly 1930+). A Minnesota Department of Transportation Cast Iron Monument was placed at the pavement surface.*